



## Benefits of the Reformed School entrance examination

- The previous scope of the examination has been expanded and adapted to new scientific findings, making it easier to detect delays in development.
- The earlier these are detected, the easier they are to treat.
- Earlier treatment reduces the burden on you and your child.
- In certain cases, a school medical examination and a consultation take place, during which further questions can be clarified.

The school entrance examination is a legally required examination in all German federal states.

Further information, including in other languages, and the legal basics can be found at  
[www.lgl.bayern.de/schuleingangsuntersuchung](http://www.lgl.bayern.de/schuleingangsuntersuchung)

## Last but not the least...

... we wish all those starting school a good start and lots of joy and success in learning!

### The examination is carried out by your local health authority.

You will find details of the location and date in the letter from your local health authority. If you have any further questions, please contact your local health authority.

At the following internet address you can check which health authority is responsible for you based on your place of residence or postal code:

<https://tools.rki.de/plztool/>



[www.lgl.bayern.de](http://www.lgl.bayern.de)

Publisher: Bavarian State Office for  
Health and Food Safety (LGL)  
Eggenreuther Weg 43, 91058 Erlangen

Internet: [www.lgl.bayern.de](http://www.lgl.bayern.de)  
E-Mail: [poststelle@lgl.bayern.de](mailto:poststelle@lgl.bayern.de)  
Telephone: 09131 6808-0  
Telefax: 09131 6808-2102

Photo credits: Bavarian State Office for  
Health and Food Safety (LGL)

Illustrations: Aline im Wunderland - Büro für visuelle Kommunikation,  
Aline Wendel, [www.alineimwunderland.de](http://www.alineimwunderland.de)

Updated as of: August 2024

Hard copy/Online: Gutenberg Druck + Medien GmbH, Uttenreuth

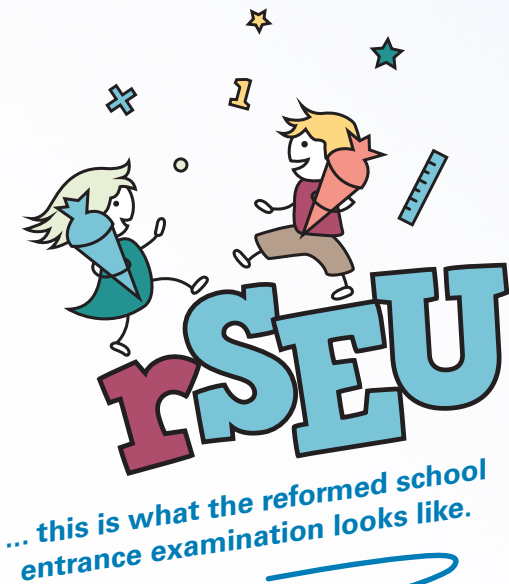
© LGL, all rights reserved

Printed on 100% recycled paper

This publication is published free of charge as part of the Bavarian State Government's public relations work. It may not be used by parties, candidates or election workers for electoral advertising purposes within five months prior to an election. This applies to state, federal, municipal and European elections. During this time, distribution at election events, at party information stands and the insertion, printing and sticking of party political information or advertising materials are particularly inappropriate. Passing it on to third parties for the purpose of election advertising is also prohibited. Even without a time reference to an upcoming election, the publication may not be used in a way that could be understood as the state government being partisan in favour of individual political groups. The parties are permitted to use the publication to inform their own members. This publication is protected by copyright, but the journalistic use - even of parts - of the publication is expressly welcomed. Please contact the publisher who will, if possible, support you with digital data of the content and in obtaining reproduction rights. All rights are reserved. The brochure is distributed free of charge; any distribution against payment is prohibited. This brochure has been compiled with great care. However, no guarantee can be given for its accuracy and completeness. We are not responsible for the content of third-party internet offerings.



BAVARIA | DIREKT is your direct link to the Bavarian State Government. You can obtain information material and brochures, information on current topics and Internet sources as well as information on authorities, responsible bodies and contact persons at the Bavarian State Government by calling 089 122220 or by sending an email to [direkt@bayern.de](mailto:direkt@bayern.de).



... this is what the reformed school  
entrance examination looks like.

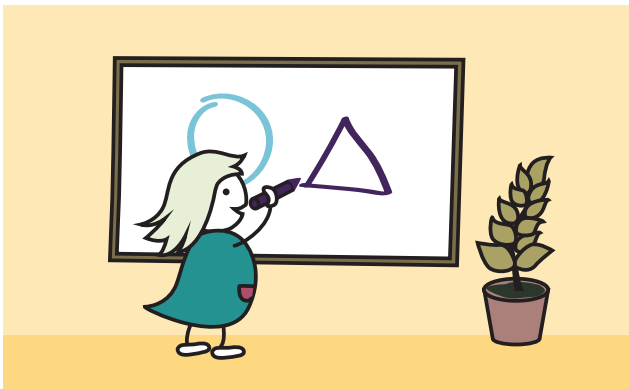
# Reformed School Entrance Examination

## What is the Reformed School Entrance Examination?

Previously the school entrance examination used to take place a few months before school started. Scientific findings now show that examination conducted earlier has advantages for children. Therefore, during the reformed school entrance examination, the children are examined in the penultimate year of kindergarten. This is not about starting school earlier, but rather to give more time for support or treatment should the examination reveal any delayed development or health impairments. These can often be treated with little effort before school starts.

**All children should have the best possible chance of starting school successfully.**

The name reformed school entrance examination refers to the Bavaria-wide continuation of the pilot project "Health and Developmental Screening in Kindergarten Age". It will replace the previous school entrance examination. During the changeover phase, it may not be possible to examine all children in their penultimate year of kindergarten. Participation in the (reformed) school entrance examination is mandatory pursuant to Article 80 of the Bavarian Law on Education and Teaching



## The examination

### Screening of all children by a specialist in social medicine

The following are recorded

- Your child's weight and height
- Vaccination status and paediatric examinations from the "Yellow Booklet"

Age-appropriate and playful tests to check the following:

- Vision and Hearing
- Speech and speaking ability (what your child understands and how he or she speaks)
- Skills that are considered prerequisites for school learning (such as understanding "a lot" and "a little" or "big" and "small")

You will receive a questionnaire about your child's medical history and developmental status, which you will be asked to fill out and return to the social medicine specialist.



### The medical examination

This is also performed

- if there is suspicion of age-inappropriate development or a health disorder (abnormal findings during screening)
- if a paediatric examination is missing, such as examination No. 8 or 9 depending on the age of the child
- at the request of the parents
- if the school doctor considers this necessary.

The school doctor will discuss the next steps with you. Further medical examinations may need to be carried out, if required.

The following will be sent to you in writing.

- the outcome of the consultation
- a covering letter for the paediatrician, family doctor or specialist if further clarification is necessary.

After completing the school entrance examination, you will receive a **form to submit to the school.**